

Table of Contents

- 1) CBIS
- 2) Juanita Richards
- 3) Eastern WA Economic Alliance
- 4) Partners & Investors

Contact Us:

Physical Address: Grant County EDC, 6594 Patton Blvd NE, Moses Lake, WA 98837

Billing Address: PO Box 2359, Moses Lake WA 98837

Phone: 509-764-6579 Fax: 509-762-5161

Email: emily@grantedc.com allan.peterson@wsbdc.org

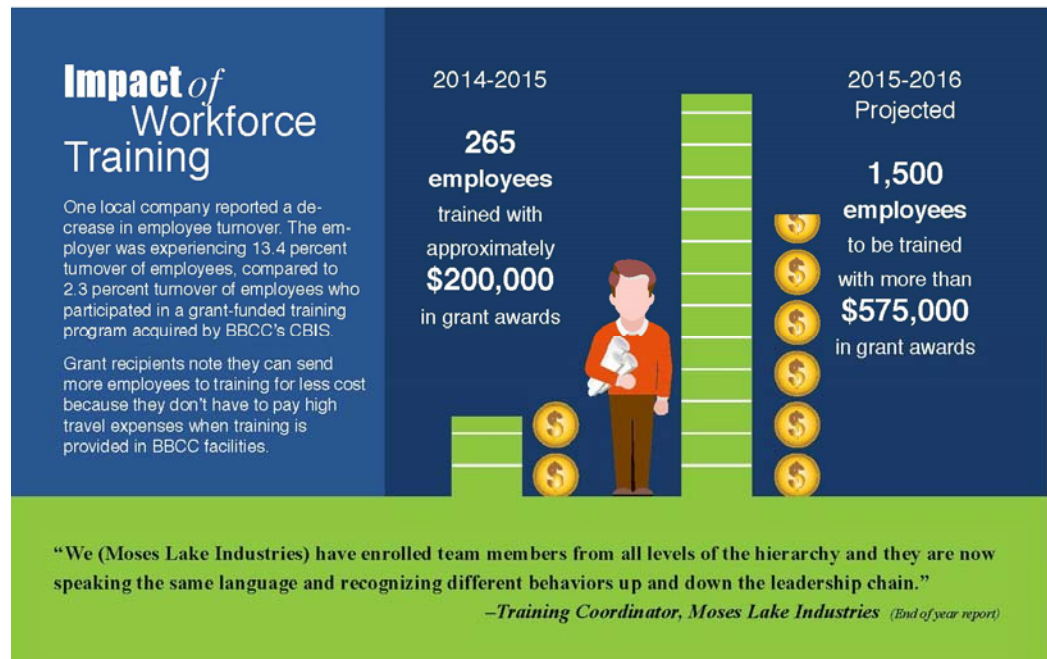


Center for Business & Industry Services Working for Our Community

The Center for Business and Industry Services (CBIS) is responsible for directing, planning, and operating industry and business training in BBCC's service district. The Center works with other campus departments to provide customized services to a diverse clientele, including rapid start-up training for new employers and programs, and securing training subsidies for employers. From basic skills to strategic planning, CBIS offers affordable training for a competitive world as it responds to the changing workforce needs of local communities. For more information, contact Beth S. Laszlo at 509.793.2425. bethl@bigbend.edu

Job Skills Grant Partners for the past 2 years, year of JSP grant partnership, and examples of training provided:

Samaritan Healthcare (2015-16) – specific clinical and administrative skill improvement, leadership, LEAN, and Patient Safety and Quality.



- SVZ (2014-15) – Production, Supervisory and Training tool development
- SGL (2013-14) – Production Training, Train the Trainer, and Supervision
- TAKATA (2015-16) – Supervision, On the Job, Chemistry, and Train the Trainer
- REC (2014-16) – LEAN, MS Project, Leadership, Electrical Basics, HR On the Job, Train the Trainer
- Lineage Logistics (2015-16) – CDL Certification for all drivers
- Moses Lake Industries (2014-16) – Leadership, Chemistry, Project Training, Communications, HR Law and Ethics, Supervision, Industry Software Training



Juanita Richards Has Built Networks in Grant County

When Horizon Credit Union's Juanita Richards was asked for a contribution for the Grant County Economic Development Council, she asked a company vice-president for permission. The donation was approved and the vice-president said, "Maybe someday you'll be on the board of directors." At the time, Richards thought that would never happen, but she just ended her term as President of the Grant County EDC having been on the board since 2012.



Richards is originally from San Diego, California. When she got married, her husband lived in Grant County so she moved. She says she needed to get out of Southern California because Grant County and Moses Lake are "a much better place to raise kids. The kids ended up in a much better spot because I moved here."

Richards started college in California but ended up finishing her education at Big Bend Community College. "It took me twenty to get my two," she says with a smile.

Twenty-three years ago, Richards started working at Columbia Basin Federal Credit Union, which later merged with Horizon Credit Union. She started as a teller and is now Regional Manager over six branches: Colville, Davenport, Deer Park, Ephrata, Moses Lake, and the branch in the Moses

Lake Safeway. She works to keep consistency between the branches so that when a customer walks into any of the locations, they get the same level of service and knowledge. Other challenges she faces are growing the business and keeping up to date with ever-changing regulatory requirements.

Richards enjoys her job because of the ability to work with so many different people and that the challenges are not the same every day. She also enjoys being able to learn and grow in the iJuandustry.

"I'm very interested in activities going on in the community," Richards says. That drew her to the monthly EDC board meetings. "I'd walk away energized and more knowledgeable about the community and looking forward to the next meeting," she explains. Dale Pomeroy noticed

she'd been coming to meetings and asked her to be on the board. Soon she was Treasurer and then later President. "You know so much about the surrounding community," Richards says, because you hear it from the members of the board. "As a unified group of individuals and community members we have a stronger group for bringing in new business."

"If you're not involved, you're missing the opportunity to know other individuals in the community," Richards explains about the EDC. The EDC, she says, builds a network of individuals that builds a stronger community. "I've learned so much," she says, of being involved with the EDC.

The biggest change Richards says she's seen in Grant County is all the new business. "More opportunities for jobs

and more opportunities for shopping," she explains, citing SGL, Genie, and REC.

Richards is also a member of the Kiwanis Club of Moses Lake and a Trustee at Big Bend Community College. She serves on committees for Samaritan Hospital. "I think the college does a great job," Richards says, but she would like to see the surrounding school districts have more growth and support, including new buildings.

Richards's family enjoys camping and boating. "We take full advantage of the recreational opportunities in the state." And, she adds, "Not only is my family here but I've built up family from friends of business associates. The relationships I've built with people over the past twenty years," are part of why she likes living in Grant County. She enjoys the four seasons and that there are no traffic jams on her five-minute commute to work. Also, Richards has three grandchildren. "They all live here so I'm never moving anywhere else."





Eastern Washington Economic Development Alliance Formed

Adams County Development Council, Grant County Economic Development Council, Port of Pasco and Yakima County Development Association have come together to form the Eastern Washington Economic Development Association.

“We were all going out trying to market our own regions,” said Emily Braunwart, Business Recruitment Manger for the GCEDC. “And by doing this we tended to duplicate many efforts. Site selectors and companies didn’t want to talk to such a small area.” Now the four entities are able to cover a larger region and pool resources to market as one area. Over 60 different crops are grown in Eastern Washington and the region is one of the largest agriculture producing areas.

The entities work together seamlessly and represent each other at all shows and conversations with businesses. The first show the alliance attended was the Northwest Food and Beverage Expo in Portland, OR. There the team had a booth and met with many companies who wanted to learn more about the region. The alliance was also able to reconnect with businesses they had previously met and continue conversations.

The alliance also traveled to the World Ag Expo in Tulare, CA. At the Expo it was the

Welcome to Eastern Washington



Located in the heart of one of America's most diverse farming regions, Eastern Washington grows profits for food processors and related industries.

Port of Pasco and Adams County who represented the group due to conflicts in scheduling. “It was so wonderful to hear about the experience from Stephen McFadden with Adams County,” commented Braunwart. “The alliance met with nineteen companies and many of those companies were specifically asking about Grant County. It was so great ot be represented event though we couldn’t make the show.” The next show the alliance will travel to is the Natural Products Expo West in Anaheim, CA.

The alliance plans to attend as many shows together as possible each year. The main focus will be on agriculture, but plan to include other industries that the communities also have in common. “We are excited to see where the alliance will take us and how it will benefit all our communities in the long run,” explained Braunwart. “We are all in this together and we all want to strategically see Eastern Washington grow.”

Eastern WA Economic Development Alliance



Stephen McFadden
Economic Development Director
stephenm@co.adams.wa.us
509.331.2025
growadamscounty.com



Emily Braunwart
Business Recruitment Manager
emily@grantedc.com
509-764-6579
grantedc.com



Gary D. Ballew
Dir. of Economic Development & Marketing
gballew@portofpasco.org
509.547.3378
portofpasco.org



Joe Schmitt
Business Recruitment Director
joe@ycda.com 509.575.1140
ycda.com



Partners & Investors

Founders Circle (\$75,000+ up)

ASPI Group
City of Moses Lake
City of Quincy
Grant County
Grant County PUD
Port of Moses Lake
Port of Quincy

Platinum Division (\$50,000-\$74,999)

Central Terminals LLC
Columbia Basin Herald
Microsoft Corporation
Samaritan Healthcare
Washington Trust Bank
Yahoo!

Gold Division (\$25,000-\$49,999)

Chemi-Con Materials
Confluence Health
Genie Industries
Hayden Homes
McKinstry Co., LLC

Silver Division (\$15,000-\$24,999)

AKZO Nobel
City of Ephrata
CliftonLarsonAllen LLP
Port of Ephrata
Port of Mattawa
REC Silicon

Bronze Division (\$2,500-\$14,999)

Accredited Appraisals
Agri/Com Appraisals
Alsted Real Estate
Argus Insurance
Aviation Technical Services
B & D Communications
Basic American Foods
Barrett Business Services, Inc.
Belle Enterprises Inc.
Big Bend Community College
Canfield & Associates
Cayuse Lake View Home Sites
Central Bonded Collectors
City of Electric City
City of George
City of Royal City
City of Soap Lake
City of Warden
Coldwell Banker Tomlinson Ranch & Home
Columbia Basin Development League
Columbia Basin Job Corp
Columbia Basin Railroad
Columbia Electrical Supply
Columbia Glass Inc.
Columbia Northwest Engineering

Bronze Division Continued

Consolidated Disposal Service, Inc.
Dano Law Firm, PS
Express Employment Professionals
Gary Mann Real Estate
General Dynamics—OTS
Guild Mortgage Company
Horizon Credit Union
Housing Authority of Grant County
Inland Cellular
Inland Tarp & Liner, LLC
ITC Services, Inc.
J & M Electric
JR Newhouse Co., PLLP
Key Bank
Lad Irrigation Co., Inc.
Lamb Weston, BSW
Landau Associates, Inc.
LC Farms, Inc.
Lenroc Company
Linage Logistics
Live Nation-Gorge Amphitheatre
Mardon Resort
Martin Morris Agency
Million Air Moses Lake
Moses Lake Chamber of Commerce
Moses Lake Community Health Center
Moses Lake School District
National Frozen Foods
Northland Communications
Northwest Farm Credit Services
Pillar Rock Grill/Moses Lake Golf Club
Polhamus Heating & Air Conditioning
Port of Coulee City
Port of Hartline
Port of Royal Slope
Port of Warden
Quincy Farm Chemicals, Inc.
Quincy Foods
Rock Steel Structures
SGL Automotive Carbon Fibers
Skaug Brothers, Inc.
SkillSource
Skone & Conners
Tommer Constructions Co., Inc.
Total Employment & Management (TEAM)
Town of Coulee City
Trask Insurance Inc.
Umpqua Bank
Western Pacific Engineering
Western Polymer Corporation
Windermere K-2 Realty
Zip Truck Lines, Inc.

Friends of the EDC

Justin Ashley
Steve Ausere
David Bailey

Friends of the EDC Continued

Susie Barr
Terry Brewer
Jane Dickinson
Randy Dickinson
Dick Ealing
Jeff Foster
Frances Irwin
Rory Knapp
Denise Lefler
Fred Lischka
Don Long
Alan Lunderburg
Col. Clyde Owen
Dale Pomeroy
Jeff Railton
Sheldon Townsend
Pat Wold

Board of Directors

Juanita Richards, Horizon Credit Union, President
Ray Towry, City of Ephrata, Vice President
Char McDowell, TEAM, Secretary
LeAnne Parton, BBCC Foundation, Treasure
Gary Ash, National Frozen Foods, Past President
Chuck Berrie, Grant County PUD
Juliann Dodds, Umpqua Bank
Rick Heiberg, City of Coulee City
Kent Jones, Port of Moses Lake
Brian Kuest, Port of Quincy
Jon Lane, City of Moses Lake
Eric LaFontaine, Columbia Basin Herald
Pat Millard, Port of Warden
Alice Parker, Columbia Basin Development League
Irene Plenefisch, Microsoft
Dale Pomeroy, Pomeroy Farms
Marvin Price, LambWeston/BSW
Reed Raymond, Hayden Homes
Chris Romm, BBSI
Theresa Sullivan, Samaritan Healthcare
Carolann Swartz, Grant County