



Table of Contents

- 1) CARES Act Dollars Coming
- 2) Grant County EDC Drone
- 3) EDC and Esri

Contact Us

Grant County Economic Development Council
6594 Patton Blvd NE | Moses Lake, WA 98837 | Phone 509.764.6579
brant@grantedc.com | nic@grantedc.com
allan.peterson@wsbdc.org | rebecca@grantedc.com



Source: senate.gov

The Grant County EDC has almost completed the Working Washington Grants that were granted to 19 different businesses in Grant County. Only two more contracts remain incomplete at this time and things are moving along quickly.

The CARES act is bringing another 2.5 million dollars to Grant County in Federal Grants. We'd like to thank the county commissioners for allocating these funds for small businesses to help in these difficult times. The process for these will likely be different from that of the Working Washington Grants, and need to be completed by October of this year.

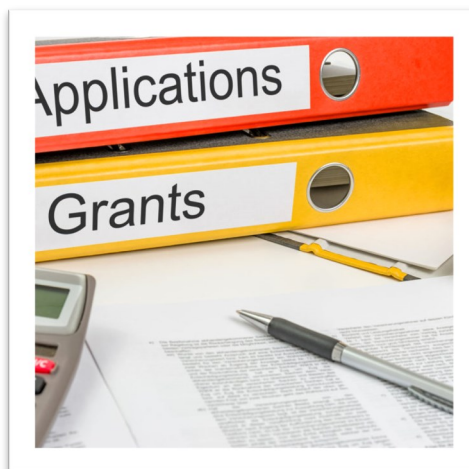
When all is said and done, Grant County will likely end up seeing closer to 2.7 million dollars in grants that our office will be handling for the foreseeable future. Things

The CARES Act is bringing more dollars to Grant County:

are moving quickly and we hope to have more information on this process in the next couple of weeks.

We are very proud to have this opportunity to help facilitate these grants and help our Grant County recover from this pandemic. The EDC appreciates the calm and collective manner in which residents applied for these grants, both when receiving the grants and being denied access to grants.

With the previous 2.7 million dollars stated, we might be seeing close to 270 individual grants to share with our community and are happy to help streamline this process wherever possible. Nic Thurston is becoming a professional at processing grants!



Source: <https://getfullyfunded.com/6-keys-getting-grants/>

Grant County EDC has new tech: Drone and 360-degree GoPro



Source: DJI website

As discussed in our previous newsletter, Grant County EDC has purchased both a drone and a 360-degree camera!

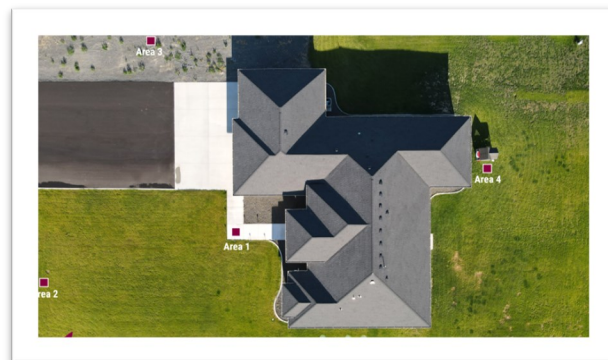
We went with a DJI Mavic Pro 2 and a GoPro Fusion 360. Both of these high-tech devices will enable us to view any site available in

As we mentioned in our previous newsletter, this is certainly the right time to develop this sort of thing. Where social distancing and concern are found almost everywhere– we want to be sure to be at the forefront of availability for our clients!

Once again, we want people to remain interested in Grant County even if they are uncomfortable with traveling at this time.

wide variety of new ways.

Nic Thurston will drive out to these sites throughout Grant County, send up the drone to take an aerial shot, and then use the GoPro Fusion to put marks on the aerial shot that will allow people to view the site at ground level in a full 360-degree photo that they can look around in!



Grant County EDC Tools Showcase: Esri

The Grant County EDC's website has quite a few powerful tools available to the public for use. This month we are taking a look at Esri, our GIS software.

GIS stands for Geographic Information System, and this is used to store data related to specific locations on the Earth's surface.

Using this data, we can express what the demographics are for any given area in Grant County. We can see the average ages, average salaries, home costs and much, much more using Esri. And it's free for you to use!

Esri is the global market leader in GIS according to their website, and they have a massive amount of data



THE SCIENCE OF WHERE™

available for use. Esri's main software development is ArcGIS, their mapping and analytics platform.

ArcGIS is one of the most powerful and flexible applications for applying location-based analytics to any business platform– large or

small. You can use their tools to gain greater insights into communities to better understand their needs and to help determine where your business might fit the best.

The tool is *powerful*! And you can access it on our website: <https://grantedc.giswebtechrecruit.com/>

Try out Custom Reports, drop a Pin on the map, and then pull some Esri Demographic Reports for your perusal!



Partners & Investors

Founders Circle \$15,000+

ASPI Group
City of Moses Lake
City of Quincy
Grant County
Grant County PUD
Port of Moses Lake
Port of Quincy

Platinum Division \$10,000-\$14,999

Central Terminals LLC
Columbia Basin Herald
Microsoft Corporation
Samaritan Healthcare
Verizon

Gold Division \$5,000-\$9,999

Confluence Health
Genie Industries
Hayden Homes

Silver Division \$3,000-\$4,999

City of Ephrata
CliftonLarsonAllen LLP
Nouryon
Port of Ephrata
Port of Mattawa
REC Silicon

Bronze Division \$500-\$3,999

Accredited Appraisals
Agri/Com Appraisals
Aviation Technical Services
Banner Bank
Basic American Foods
Barrett Business Services, Inc.
Big Bend Community College
Big Bend Community College Foundation
Cascade Consulting Group
Central Bonded Collectors
Chemi-Con Materials
City of Electric City
City of George
City of Royal City
City of Soap Lake
City of Warden
Clear Risk Solutions
Coldwell Banker Tomlinson Ranch & Home
Columbia Basin Development League
Columbia Basin Job Corp
Columbia Basin Railroad
Columbia Electrical Supply
Columbia Glass Inc.

Bronze Division Cont.

Consolidated Disposal Service, Inc.
Dano Law Firm
Gary Mann Real Estate
General Dynamics—OTS
Grand Coulee Dam Area Chamber of Commerce
Guild Mortgage Company
Horizon Credit Union
Housing Authority of Grant County
Hub International
J & M Electric
JR Newhouse Co., PLLP
LambWeston
Landau Associates, Inc.
Lenroc Company
Live Nation-Gorge Amphitheatre
Mardon Resort
Martin Morris Agency
Moses Lake Chamber of Commerce
Moses Lake Community Health Center
Moses Lake School District
Northland Communications
Northwest Farm Credit Services
Polhamus Heating & Air Conditioning
Port of Coulee City
Port of Hartline
Port of Royal Slope
Port of Warden
Quincy Foods
Rock Steel Structures
SGL Group
Skaug Brothers, Inc.
Skone & Connors
Total Employment & Management
Town of Coulee City
Trask Insurance Inc.
Umpqua Bank
Western Pacific Engineering
Western Polymer Corporation
Windermere K-2 Realty
WorkSource Central Basin
Zip Truck Lines, Inc.
Justin Ashley

Friends of GCEDC

David Bailey
Terry Brewer
Jeff Foster
Rory Knapp

Friends of GCEDC Cont.

Denise Lefler
Fred Lischka
Col. Clyde Owen
Dale Pomeroy
Sheldon Townsend

Board of Directors

William Coe
President

Dr. Terry Leas
Past President

Gregg Fletcher
Vice President

Juliann Dodds
Treasurer (Past President)

Dale Pomeroy
Secretary, 2012 Past President

Caralyn Bess
Director
Lisa Karstetter
Director
Don Kersey
Director
Brian Kuest
Director, 2004 Past President
Lars Leland
Director

Jim McCullough
Director
Brian Meiners
Director, 2006 Past President
Peggy Nevsimal
Director
Marvin Price
Director, 2013 Past President
Juanita Richards
Director, 2015 Past President
Katherine Ryf
Director
Eric Skaug
Director
Theresa Sullivan
Director
Louis Szablya
Director
Tom Taylor
Director